

Woodland Advisor
Program's Vision:

To be
Minnesota's
leading resource
for citizens
participating in
forestry learning.

- **Forest in Transition**
- **EAB in Winona Co & Ash Management Guide**
- **Leafsnap, pg 2**
- **New Climate, pg 2**
- **Tax News, pg 2**
- **Biocontrol of Buckthorn, pg 2**
- **Volunteer Opportunities, pg 2**
- **Upcoming Events, pg 3**
- **MN Family Woodland Conference, pg 3**
- **Koochiching Forest Legacy Project, pg 3**
- **Suggested Reading, pg 4**
- **Office Closing, pg 4**
- **WA program, pg 4**

woodland ADVISOR

Volume 7 Issue 4

Fall 2011

Forests in Transition - Wind & Fire

By Angela Gupta

I'm sure you've all heard about the Pagami Creek Fire in the Boundary Waters Canoe Wilderness Area which is causing large scale forest changes up north. Did you hear about the huge windstorm on July 1 in eastern Minnesota that felled thousands of acres of trees and closed St. Croix State Park until Sept 30? That storm damaged 7,500 acres and 74 buildings in the park alone. This summer and fall have seen widespread changes for some of Minnesota's forests. It's important to remember that forest transition often happens suddenly and unexpectedly. Fire and wind are natural occurrences that cause forest succession. These changes usher out one forest type and age class to the benefit of another.

If you're a landowner affected by any large scale forest transition it's important to first remember safety. New hazard trees around buildings and roads may need to be removed.

Next it's time to assess the damage, in acres, wood volume, etc, and then plan for the next step. Is there salvageable wood? Is it marketable? Remember salvage harvests are harder than a traditional harvest because the wood is often scattered helter-skelter across the landscape making harvesting more dangerous and time consuming. Also, markets can quickly become flooded with salvage material causing prices to drop. However, leaving material on the ground can lead to increased fire danger and quickly degrade the marketability of the wood because of insects and decay. Having a woodland stewardship management plan really helps in these situations to make it much easier for consultants to come up with estimated value. Call your consulting forester, they can help you find a market and an operator with the equipment suited for your land.

Next its time to plan for the forest that will begin to grow. Do you need to replant or will natural regeneration be enough? Are invasive species likely to take over these disturbed stands and require management? Finally realize there may be tax implications (casualty loss) due to the sudden damage to your forest, so be sure the check that out.

A quick search on the myminnesotawoods.umn.edu website can offer more information on many of these issues.

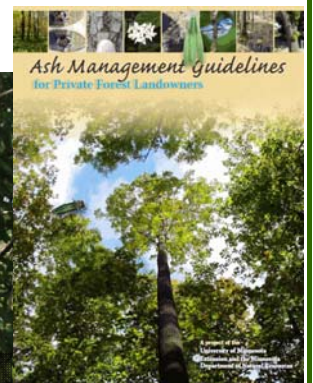


EAB in Winona Co. & Ash Management Guide Available

by Angela Gupta

The Minnesota Department of Agriculture is bringing in their emerald ash borer (EAB) traps and finding a few beetles. Most notably EAB was found in Winona Co. for the first time. Winona Co. is now under the EAB quarantine. Additionally, one of these finds is mature. EAB killed trees fully infested with EAB larvae were found along the Interstate 90 corridor. Preliminary dating of this infestation is about 5-6 years. The total infestation size has not yet been determined, but I imagine it will include private forest land - a first in Minnesota. This is a sad day for our forests, but one we've known was coming for a few years.

If you have ash in your woodlands it's important to remember now is the time to start preparing for EAB. The new Ash Management Guide for Forest Landowners is available free electronically or as a hard copy for only the cost of postage from <http://z.umn.edu/ashguide>. This Guide offers forest landowners information on the history of ash; ash species identification; ash as a resource; recommendations for ash management in Wet Forests, Floodplain Forests, Mesic Hardwoods, Forested Rich Peatland, and Fire Dependent forests; wildlife among the ash, and other implications for EAB for forest landowners. This Guide was developed specifically for YOU, the family forest landowner, please check it out!



Map of EAB quarantine and pictures from the MN Department of Agriculture of EAB infested ash trees from I90 in Winona Co.

Leafsnap = Tree ID Cell Phone App for iPhone users

A new cell phone application developed by The Smithsonian Institute, Columbia University, and the University of Maryland is the world's first plant identification mobile app using visual search. Users need only take a picture of a tree's leaf. Leafsnap will then provide the species name, high-resolution photo, and information about the tree's flowers, fruit, seeds, and bark. In addition to helping users understand the trees around them users will also be helping science. As people use Leafsnap the free mobile app automatically shares the images, species name, and location with a community of scientists. This information will be used to monitor population growth and decline. Currently Leafsnap has trees of the northeast US but will be expanded to include trees for the entire US. It's available for iPhone and iPad users now and should be available Android users soon. To download the app or for more information visit: <http://leafsnap.com/>

New Climate "Normal" Reveals MN Will be Hotter & Wetter



Climate normals are based on a 30 year data set. In July the new "normals" became available from the National Oceanic and Atmospheric Administration. This data replaces information from the 1970s which was a cold decade, with the 2000s being the warmest decade on record. Winter in Minnesota is getting warmer, especially at night. The average high temperature in January rose 1.8 degrees at MSP Airport. The average January low showed the biggest rise of any month, +3.2 degrees. The overall average temperature in January rose 2.5 degrees. Summer nights are about 1 degree warmer in the new data set. Late summer and fall have trended wetter (about 1") in the past decade. Annual precipitation has increased 1.2" for MSP. January remains our "snowiest" month of the year on average at 12.1". December has moved into 2nd place at 11.5" replacing March (10.2") which is now in 3rd place. Overall winter season snowfall fell nearly 2", from 55.9" to 54" annually. A warmer wetter climate could be stressful for some tree species. Additionally winter insect mortality may decline causing more and larger insect outbreaks in coming years.

Forest Landowner Tax News for 2011

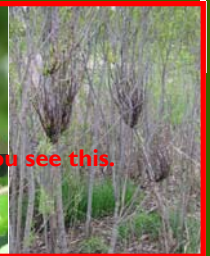
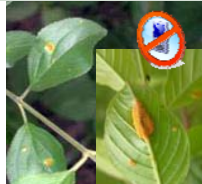
Good news, the Sustainable Forestry Initiative Act (SFIA) survived in the state legislature this summer! Effective this year payments will remain fixed at \$7 per acre. The maximum payment is limited to \$100,000 to any taxpayer or tax ID number. Those who are limited by this maximum payment have the option of removing their lands from SFIA and the covenant without having to wait four years. The effective date of the removal will be December 31, 2011.

In addition the US Forest Service has a new 2-page publication, *Tax Tips for Forest Landowners for the 2011 Tax Year*, available. It is valid as of September 15, 2011. It outlines several tax policies and offers examples for: Personal Use, Investment or Business Property; Timber Basis and Depletion; Timber Sales; Installment Sales; Timber Management Expenses; Reforestation Costs; Depreciation, Bonus Depreciation, and Sec. 179 Expenses; Cost-share Payments; Casualty and Theft Loss; and Filing Form T. Google "*Tax Tips for Forest Landowners for the 2011 Tax Year*" for the full publication.



Biocontrol for Buckthorn - You Can Help!

As you're out this fall working on buckthorn control look for witches brooms (see photos far right). If you find witches brooms on buckthorn and want to help researcher working on a possibly biocontrol for buckthorn take a picture and get the GPS coordinates if possible and contact Dr. Roger Becker, University of MN (becke003@umn.edu). For more information visit <http://tinyurl.com/buckthorncontrol>



Volunteer Opportunities

"Service to others is the payment you make for your space here on earth."

Mohammad Ali~

- **Tree Planting and Maintenance** - Help beautify the Red River State Recreation Area by doing weeding, planting trees, and maintenance of newly planted tree locations in the park. Some knowledge of trees and native vegetation would be helpful, but not necessary. Also, being able to work alone without a lot of supervision is desirable. Volunteer one or two days in September. Training will be provided. For more information contact Gladwin Lynne, Manager, East Grand Forks, MN 56751, at (218) 773-4950 or email gladwin.lynne@state.mn.us.
- **Minnesota's Breeding Bird Atlas: Help Write the Book on Minnesota's Breeding Birds!** - This is the largest, most comprehensive bird conservation project ever conducted in Minnesota. In 2009, Minnesota began this 5-year project to document every breeding species in the state and where they nest. If you ever needed a reason to get outside and go birding, this is it. 2011 was our third of five seasons. There is still time, but only 2 more years left to join the project and make a lasting contribution to bird conservation. Results from observations submitted so far show changes to many species ranges. Since 1975, preliminary reports show that Red-bellied Woodpeckers have expanded their breeding range well north of Stearns County. To learn more about this project, how to participate, or see Atlas results to date, check out our project website, www.mnbbba.org. Review the 2011 Handbook, under the Materials tab, for important survey information then use the Easy Guide to get started.



Angela Gupta is the Woodland Advisor Volunteer coordinator. To contact her call (888)241-4536 or agupta@umn.edu

Upcoming Events

Activities: Woodland Advisor Program Classes are underlined. For more information please see the web-site <http://woodlandadvisor.org/>

October 2011

- Sat, Oct. 1, Forest Invasive Species, 8 AM - noon. Dodge Center Community Center, 35 E Main St., Dodge Center. Contact Emily Hutchins 507-455-5841 or Emily.hutchins@state.mn.us
- Thurs, Oct. 6, Supercharge Your Trees!, all day. Brimson, north of Two Harbors. Event free but limited to 25 participants. Register online at www.MLEP.org/TrainingOnlineReg.htm
- Sat, Oct. 8, Dave's Pruning of Evergreens, 9 AM - 11 AM. U of M St. Paul Campus Nursery. Outdoor class, dress for the weather. \$15 preregistration required, send to Rebecca Koetter, 1530 Cleveland Ave. N., St. Paul, MN, 55108-6112 or contact Dave Hanson, DLHanson@umn.edu for details.
- Mon, Oct. 10, Columbus Day - some offices closed!
- Tues, Oct. 11, Field Demo: Intermediate Treatment of White Spruce Trees, 3 PM - 5 PM, Gunn Park, Highway 38, Grand Rapids, MN. Register by calling Itasca Co. Extension 218-327-7486
- Wed, Oct. 12, Economics of Producing Short Rotation Woody Crops for Energy (online), noon - 1 PM. Details and registration information are available at MyMinnesotaWoods.umn.edu Extension Fall 2011 Woody Biomass Webinar Series. For info contact Dioimy Zamora at 612-629-9727 or zamor015@umn.edu or Gary Wyatt at 507-389-6748 or wyatt@umn.edu
- Wed, Oct. 26, Biomass Harvesting as a Wildlife Management Tool (online), noon - 1 PM. Details and registration information are available at MyMinnesotaWoods.umn.edu Extension Fall 2011 Woody Biomass Webinar Series. For info contact Dioimy Zamora at 612-629-9727 or zamor015@umn.edu or Gary Wyatt at 507-389-6748 or wyatt@umn.edu
- **Mon, Oct. 31 - Halloween!**




Picture from Flickr by sillydog

November 2011



Picture from Flickr by Asea

- Sun, Nov. 6 - Daylight Savings Time - Fall Back 
- Wed, Nov. 16, Biomass Energy: Private Sector Perspective (online), noon - 1 PM. Details and registration information are available at MyMinnesotaWoods.umn.edu Extension Fall 2011 Woody Biomass Webinar Series. For info contact Dioimy Zamora at 612-629-9727 or zamor015@umn.edu or Gary Wyatt at 507-389-6748 or wyatt@umn.edu
- TBD, Nuts & Bolts of Timber Sales, 6 PM - 9 PM, Heintz Center, Rochester, 1926 Collegeview Dr. SE, Rochester. For info contact Angie Gupta 507-280-2869 or agupta@umn.edu
- **Thurs, Nov. 24 - Thanksgiving Day**

December 2011

- **Wed, Dec. 12 - Chanukah begins**
- **Sun, Dec. 25 - Christmas Day**

The granting cycle we often organize our classes around has been pushed back, as result we are less sure of our financial situation and have fewer classes this fall. Things are likely to pick up in the winter and spring so enjoy the holidays and stay tuned!



Minnesota Family Woodlands Conference: March 9-10, 2012



If you own woods in Minnesota, you won't want to miss this event. With over 70 presentations and a large number of exhibitors, we'll pick up where the 2001 and 2006 *Million Acres in Minnesota* conferences left off. Mark your calendar for March 9 and 10, 2012 in Duluth and watch MyMinnesotaWoods for more details.

Koochiching Forest Legacy Project Conserving the North Woods

The Koochiching Forest Legacy Project will conserve nearly 150,000 acres of working forest in Minnesota's north woods, by 2012. Partners including The Nature Conservancy, the State of Minnesota, Trust for Public Land, and US Forest Service are working to protect these forests through a working forest conservation easement. This project will ensure these forests continue to provide products, jobs, wildlife habitat, and open space. Much of this land was previously owned by Boise Cascade until it sold it to Minnesota Forest Capital Partners, LLC in 2004.

For more information visit http://www.na.fs.fed.us/ss/11/koochichin_fore_legacy.pdf



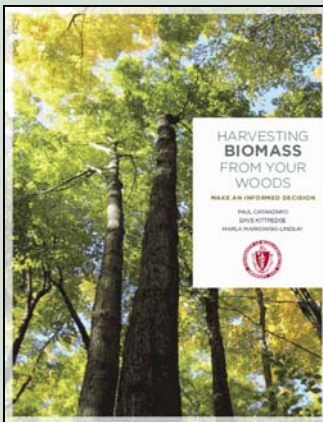
We're on the web!
<http://woodlandadvisor.org/>

University of Minnesota Extension is an equal opportunity educator and employer.

Suggested Reading

Harvesting Biomass from Your Woods is a new 8-page publication from the University of Massachusetts.

<http://www.masswoods.net/images/stories/pdf/biomass-pamphlet-web.pdf>



Woodland Advisor



UNIVERSITY OF MINNESOTA
EXTENSION

Regional Office — Rochester
863 30th Avenue SE
Rochester, MN 55904-4915

Phone: (888) 241-4536
Fax: (507) 280-2872
E-mail: agupta@umn.edu

Return Service Requested

Fergus Falls & Hutchinson Extension Offices close

In an effort to cut costs the Fergus Falls and Hutchinson Extension Regional Offices will be closing by the end of the year. No faculty or educators will be laid off as a result, but it is uncertain if support staff will be able to relocate. There are no forestry related educators in these offices so the Woodland Advisor team is hopeful their impact will be minimal to the program.



What is the Woodland Advisor Program?

The Woodland Advisor Program is your opportunity to learn about forests and forestry. Classes are generally 3 hours in length. Participants who complete 45 hours of woodland ecology and management classes receive a certificate of completion. Classes also provide foresters and Stewardship Plan preparers with continuing education credit. Participants who are interested in ongoing educational opportunities after completing 45 hours of classes and want to participate as a volunteer can become a Woodland Advisor Volunteer. Woodland Advisor Volunteers are leaders in their communities. They help their neighbors learn more about the options and opportunities that exist for their forestland. This helps all Minnesota's citizens by helping to maintain the health, beauty, and productivity of Minnesota's forest land.

Classes are open to anyone on a pay-as-you-go basis. Costs may vary, but most 3-hour sessions cost \$20. A discount may be available for Minnesota Forestry Association Members on classes where registration is handled through the University of Minnesota Extension. Inquire when you register about a discount.

For class times and locations, registration information, or more about the Woodland Advisor program, contact the Cloquet Forestry Center at 888-241-0724 or visit cfc.cfans.umn.edu/wa/.