

Woodland Advisor  
Program's Vision:

To be  
Minnesota's  
leading resource  
for citizens  
participating in  
forestry learning.

- Living snow fences:  
Pg. 1 & 3
- Chuck Erickson: making a  
difference: Pg 1
- Volunteer Opportunities:  
Pg. 2
- Upcoming Events: Pg. 3
- Conferences: Pg. 3
- Suggested Reading for  
this Quarter: Pg. 4
- Meet a Woodland  
Advisor Organizer: Pg. 4
- What is the Woodland  
Advisor Program?: Pg. 4

# woodland ADVISOR

Volume 2 Issue 2

Spring 2006

## Living snow fences saving lives, providing income

By Gary Wyatt

Severe winter weather may be a faint memory after our recent mild winters. March 2006, however, has given us a reminder that it doesn't take long to feel the danger when you're driving in blowing and drifting snow conditions.

Winter weather is the natural disaster that claims the most lives in Minnesota, according to the Minnesota Division of Emergency Management. From January 1984 to April 2002, hazardous driving conditions associated with blowing snow or soil resulted in 142 fatalities statewide, (an average of eight per year) with an estimated cost per fatality of \$3.4 million or \$27.2 million annually. In addition, these conditions are responsible for an average of 284 injury accidents annually. Costs range from \$29,000 to \$270,000 per personal injury, totaling \$17 million each year.

Strategic placement of living snow fences on Minnesota roads can improve driving conditions. Living snow fences eliminate and/or minimize snowdrifts and are also effective for controlling blowing soil. Driver visibility improves dramatically, and the number of accidents is reduced. A study by the Wyoming Department of Transportation found a 70 percent reduction in auto accidents as a result of installing structural snow fences to combat blowing and drifting snow. Rural landowners and farmers have a golden opportunity to help control blowing snow on roadways, building sites and



communities. Through the "Continuous" Conservation Reserve Program (C-CRP), landowners are paid cash rent prices for establishing living snow fences in snow drifting areas for a 10- or 15-year period. These living snow fences can be established with trees, shrubs or tall native grasses. Program sign-up is through the Farm Service Agency (FSA) office and planting designs are available through the county Natural Resource Conservation Service (NRCS) office and the Soil and Water Conservation District (SWCD). There is no sign-up deadline for C-CRP. A new change in policy allows land owners to enroll the snow catch area from the planting to the roadway into the program.

The Minnesota Department of Transportation (MNDOT) recognizes the value of living snow fences and is paying farmers \$1.50 per bushel over market price to leave corn standing in fields. This was \$3.00 per bushel in 2005. A typical corn living snow fence is 1/8 to 1/4 mile long, 40 feet wide and sits 120 to 240 feet from the highway. In the winter of 2005-2006 there were 35 standing corn sites that protected nearly 16 miles of highway.

Living snow fences make better use of the public's money because the need for road plowing is reduced. Minnesota incurs significant snow removal costs by plowing and re-plowing windblown snow. Annually, Minnesota taxpayers spend approximately \$100 million in snow removal costs; MNDOT averages \$41 million.

Living snow fences help keep roads open, and open roads reduce potential delays in commerce and personal travel. According to Standard and Poor's financial information

*Continue on page 3*

## Chuck Erickson: making a difference through planning

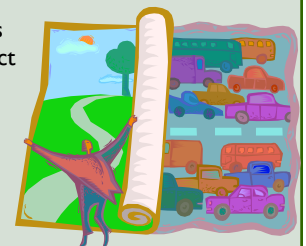
In this issue our volunteer spot light shines on Chuck Erickson, a retired farmer and woodland owner near Battle Lake. He serves on many local and state committees to help promote land use planning changes and better natural resource management.

Chuck is very active in the Farm Bureau. He serves on the County Board, on the State Farm Bureau Wood Commodity Committee, and is the chair and state representative for the Promotion and Education Program. The Wood Commodity Committee discusses woody plants, forest industry, landscape materials, and the pros and cons of legislative action including Canadian softwood tariffs. In Chuck's role as the Promotion and Education Chair he's developing curriculum on a chainsaw safety course to be incorporated into the Farm Bureau's safety trailers which reach 5000 kids annually.

Chuck also serves on the West Central Woodland Council Landscape Committee and group which formulates guidelines for county and city planners to create sustainable woodlands and improve existing woodlands. This project is spear-headed by the Minnesota Forest Resource Council.

The Ottertail County Shoreland Management Advisory Group is another avenue through which Chuck is making a difference. This group is revisiting and reworking the county rules and regulations to incorporate conservation plans and cluster developments so as to better manage community growth.

Chuck does all of this while also working on his forestland and trying to finish his Woodland Advisor courses.



## Volunteer Opportunities

Angela Gupta is the Woodland Advisor Volunteer coordinator. To contact her call (888) 241-4536 . To follow-up on the opportunities below please contact the person listed. For more detail and additional opportunities please check our website: <http://www.cnr.umn.edu/cfc/wa/volunteer.htm>

**The true meaning of life is to plant trees, under whose shade you do not expect to sit.**

*~Nelson Henderson*

- Tues., April 4, 6:00-8:00 PM, Northeast Bank, Minneapolis, MN Tree Trust. Help present on tree planting & care. Contact: Mimi Hottinger, 651-644-5800
- Sat., April 8, 9:00 AM-12:00 PM, Nokomis Community Center, Minneapolis, MN Tree Trust. Help present on tree planting & care. Contact: Mimi Hottinger: 651-644-5800
- Fri.-Sun., April 21-23, Help Extension at the Lake Home & Cabin Days booth: 4-hour shifts, various times, Minneapolis Convention Center. Contact Mike Reichenbach by April 10 for details and to sign-up: 1-888-241-0724 or 218-726-6470.
- Sat., April 22, 8:30 AM-1:00 PM, Fort Snelling State Park, St. Paul, Minnesota Envirothon program. Help staff the forestry station to introduce Minnesota Envirothon, an outdoor academic competition for students in grades 9-12, to teachers. Contact: Pete Raeker 651-296-0884
- MN Land Trust needs volunteers to monitor properties within the conservancy. There is a one day training commitment and one additional day within the year (generally the summer) to "walk" a property or two. Trainings can be found under Upcoming Events on the next page: 4/18, 4/20, & 4/27. Contact Cecily Schrader if you'd like more details on this exciting opportunity: 651- 917-6282 or [cschrader@mnlnd.org](mailto:cschrader@mnlnd.org)
- Thurs., April 27, 9:00 AM- 2:30 PM, Carlton Co. Extension & local school. Help students from 9 schools plant trees. Contact Joanne Rosberg: 800-862-3760x223.
- Sat., April 29, 9:00-11:00 AM, Midtown Greenway, South Minneapolis, MN Tree Trust. Teach and assist community volunteers to plant trees correctly. Contact Kirsten Andenas: 651-644-5800x114
- Sat., April 29, 2:00-4:00 PM, Hamline Library, St. Paul, MN Tree Trust. Help with tree selecting and planting clinic. Contact Barb Spears: 651-644-5800x113
- Tues., May 2, 8:00 AM-3:00 PM, Cedar Creek Community School, Cedar, MN Tree Trust. Teach & assist students to correctly plant trees and shrubs. Contact: Kirsten Andenas: 651-644-5800x114
- Thurs., May 4, 6:30-8:30 PM, Hamline Library, St. Paul, MN Tree Trust. Help with tree selecting and planting clinic. Contact Barb Spears: 651-644-5800x113
- Tues., May 9, 8:00 AM-3:00 PM, Isle Public School, Isle, MN Tree Trust. Teach and assist students to correctly plant trees and shrubs. Contact: Barb Spears 651-644-5800x113
- Wed., May 10, 8:00 AM-3:00 PM, Highland Elementary, Apple Valley, MN Tree Trust. Teach and assist students to correctly plant trees and shrubs. Contact: Mimi Hottinger: 651-644-5800
- Thurs., May 11, 8:00 AM-3:00 PM, Oak Ridge Elementary School, Eagan, MN Tree Trust. Teach and assist students to correctly plant trees and shrubs. Contact: Mimi Hottinger: 651-644-5800
- Fri., May 12, 8:00 AM-3:00 PM, Whittier International Elementary, Minneapolis, MN Tree Trust. Teach and assist students to correctly plant trees and shrubs. Contact: Kirsten Andenas: 651-644-5800x114
- Sat., May 13, 10:00 AM-2:00 PM, Excel Energy Riverside Plant, Minneapolis, MN Tree Trust. Staff an "Ask the Expert" booth where residents will pickup their trees. Contact: Mimi Hottinger: 651-644-5800
- Tues., May 16, 8:00 AM-3:00 PM, Ramsey Elementary, Ramsey, MN Tree Trust. Teach and assist students to correctly plant trees and shrubs. Contact: Kirsten Andenas: 651-644-5800x114
- Thurs., May 18, 8:00 AM-3:00 PM, Olson Elementary School, Bloomington, MN Tree Trust. Teach and assist students to correctly plant trees and shrubs. Contact: Kirsten Andenas: 651-644-5800x114
- Sat., May 20, 10:00 AM-2:00 PM, Jenny Lind School/Bohanon Park, Minneapolis, MN Tree Trust. Staff an "Ask the Expert" booth where residents will pick-up their trees. Contact: Mimi Hottinger: 651-644-5800
- Tues., May 23, 8:00 AM-3:00 PM, Northrop Urban Environmental School, Minneapolis, MN Tree Trust. Teach and assist students to correctly plant trees and shrubs. Contact: Kirsten Andenas: 651-644-5800x114
- Wed., May 24, 1:00 PM-4:00 PM, Plymouth Avenue at Lyndale, Minneapolis (MNDOT planting), MN Tree Trust. Help plant trees and perennials along I-94 right-of-way. Contact: Barb Spears 651-644-5800x113
- Fri., May 26, 8:00 AM-3:00 PM, Two Harbors High School, Two Harbors, MN Tree Trust. Teach and assist students to correctly plant trees and shrubs. Contact: Barb Spears 651-644-5800x113
- Thurs., June 1, 8:00 AM-3:00 PM, William Kelly Elementary, Silver Bay, MN Tree Trust. Teach and assist students to correctly plant trees and shrubs. Contact: Barb Spears 651-644-5800x113
- Thurs., June 1, 8:00 AM-3:00 PM, Westview Elementary, Apple Valley, MN Tree Trust. Teach and assist students to correctly plant trees and shrubs. Contact: Mimi Hottinger: 651-644-5800

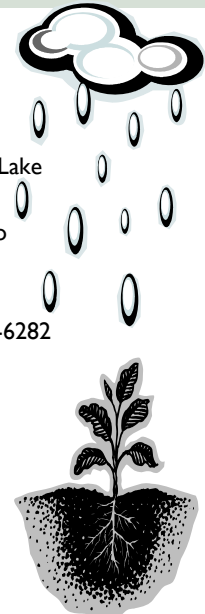


## Upcoming Events

**Activities:** Woodland Advisor Program Classes are underlined. For more information or to register please see the web-site [www.cnr.umn.edu/cfc/wal](http://www.cnr.umn.edu/cfc/wal) or call (888) 241-0724 ext. 6466. Please mark these dates!

### April 2006

- Sat., April 1: April Fools Day! Watch out for practical jokers!
- Sun., April 2: Daylight Savings Day, make sure you "spring ahead" your clocks foreword.
- Tues., April 4: Selecting and Planting Trees for Your Property, 6:00-8:30 PM, Snell Motors, Mankato
- Thurs., April 6: Firewise, 6:30-8:30 PM, Forest History Center, Grand Rapids
- Thurs., April 6: Wildlife in Your Woodlands, 6:30-9:00 PM, Chippewa National Forest Supervisor's Office, Cass Lake
- Sat., April 8: Wildlife in Your Woodlands, 9:00 AM-12:00 PM, Hartley Nature Center, Duluth
- Sat., April 8: Land Stewardship Options, 8:30 AM-3:00 PM, Eagle Bluff Environmental Learning Center, Lanesboro
- Sun., April 16: Easter Sunday
- Mon., April 17: Taxes due
- Tues., April 18: MN Land Trust Training class, Winona or La Crescent, call for details: Cecily Schrader: 651-917-6282
- Thurs., April 20: MN Land Trust Training class, Red Wing, call for details: Cecily Schrader: 651-917-6282
- Sat., April 22: Wildlife in Your Woodlands, 9:00 AM-12:00 PM, Bunker Hills Activity Center, Andover
- Sat., April 22: Earth Day!
- Tues., April 25: Tap into Spring with Birch Syrup, 6:30-8:00 PM, Forest History Center, Grand Rapids
- Wed., April 26: Administrative Professionals Day: Don't forget that special support staff person!
- Thurs., April 27: MN Land Trust Training class, Rochester, call for details: Cecily Schrader: 651-917-6282
- Thurs., April 27: Kids to Work Day: Be sure to take that special child to work with you!
- Fri., April 28: Arbor Day: *Get out and plant a tree or help someone else plant a tree!*



### May 2006

- Sat., May 6: How to Use a GPS Receiver, 8:00 AM-4:00 PM, Rainy River Community College, International Falls
- Sun., May 14: Mother's Day
- Mon., May 29: Memorial Day: enjoy the 3-day weekend!

### June 2006

- Sun., June 18: Father's Day
- Wed., June 21: Summer Solstice: enjoy those hours of sunlight!
- Thurs., June 22: Tree I.D., 4:00-8:00 PM, Extension office, New York Mills

## Woodland Advisor & Million Acre Conferences

The Woodland Advisor conference, held on Thursday evening, February 9, at the Cloquet Forestry Center, included a social dinner followed by a 4-member open panel discussion during which Woodland Advisors were able to ask forestry questions. The panel included a consultant forester, an industrial forester specializing in wildlife management, a logger, and an industrial procurement forester. There was some lively discussion during the panel presentations and a whole lot of laughter and reminiscence during the breaks.

The Million Acres in Minnesota conference was held in Duluth on February 10 & 11. This conference also seemed to be a rousing success with 700+ attending from all over the state. More than 55 different forestry topics were presented during Friday's field tours and classes and Saturday's concurrent sessions. In addition to the learning opportunities, many organizations were represented in the exhibition hall including the Woodland Advisor program and Minnesota Forestry Association. I would like to send special thanks to all the Woodland Advisor volunteers who helped at the booth: Thanks!

Continued from page 1 services, the economic disruption of shutting down all Minnesota highways for one day would cost \$66 million in lost wages and \$27 million in lost sales.

Climatologists at the University of Minnesota monitored three living snow fence sites in central and southern Minnesota in the winter of 2000-2001. There were three major conclusions of the study: some spring soil temperatures were suppressed, there were no delays in tillage or planting, and no reductions in overall crop yield.

The main challenges in establishing living snow fence plantings include weed control, location of tile lines and management of post-

emergence herbicides. Crop yields tend to increase due to environmental protection: corn, 12%; soybeans 8%; and alfalfa 80%.

As living snow fence program participants care for these strategically placed plantings of trees, shrubs and grasses, they are providing a service that will potentially save lives, money and time for them and their fellow highway travelers. To find out more about the "Continuous" CRP incentive and living snow fence plantings, contact your county FSA, NRCS or SWCD office.

The following web sites will be helpful: [www.mn.nrcs.usda.gov/technical/ecs/agron/crp/planform.html](http://www.mn.nrcs.usda.gov/technical/ecs/agron/crp/planform.html), [www.climate.umn.edu/snow\\_fence/](http://www.climate.umn.edu/snow_fence/), [www.fsa.usda.gov/daftp/cepd/crp.htm](http://www.fsa.usda.gov/daftp/cepd/crp.htm)



We're on the web!  
<http://www.cnr.umn.edu/cfc/wa/>

### Suggested Reading for this Quarter:

If you're interested in more information on the establishment of living snow fences check out this issues suggested reading: "Windbreak/Shelterbelt/Living Snow Fence Establishment" by the NRCS (Natural Resources Conservation Service) at <http://www.mn.nrcs.usda.gov/technical/ecs/agron/crp/cp5a16a17a.doc>



Woodland  
Advisor  
Program

## Woodland Advisor Program



Extension Regional Center, Rochester  
863 30th Avenue SE  
Rochester, MN 55904-4915

Phone: (888) 241-4536  
Fax: (507) 280-2872  
E-mail: [agupta@umn.edu](mailto:agupta@umn.edu)

Return Service Requested

«FirstName» «Last Name»  
«Address 1»  
«Address 2»  
«City», «State» «Postal Code»

### Meet a Woodland Advisor Organizer



Gary Wyatt is a Regional Extension Educator in the Mankato Regional Center where he specializes in Agroforestry education.

Gary was the Watonwan County Extension Educator for 20 years. He has taught classes for both Tree Care Advisors and Woodland Advisors. Developing educational programs focusing on the protection of Natural Resources in Ag Landscapes is a priority.

Gary lives in St. James with his wife Donna and two children, Asha (17) and Austin (13). They enjoy living on a small acreage where they plant a diverse array of trees and shrubs, garden, raise sheep and enjoy the peace and quiet of rural living.

### What is the Woodland Advisor Program?

The Woodland Advisor Program is your opportunity to learn about forests and forestry. Classes are generally 3 hours in length. Participants who complete 45 hours of woodland ecology and management classes receive a certificate of completion. Classes also provide foresters and Stewardship Plan preparers with continuing education credit. Participants who are interested in ongoing educational opportunities after completing 45 hours of classes and want to participate as a volunteer can become a Woodland Advisor Volunteer. Woodland Advisor Volunteers are leaders in their communities. They help their neighbors learn more about the options and opportunities that exist for their forestland. This helps all Minnesota's citizens by helping to maintain the health, beauty, and productivity of Minnesota's forest land.

Classes are open to anyone on a pay-as-you-go basis. Costs may vary, but most 3-hour sessions cost \$20. Minnesota Forestry Association Members may pre-pay for 10 core and 5 elective classes for \$240—a 20% discount. Only those classes where registration is handled through the University of Minnesota Extension Service are eligible for this discount.

For class times and locations, registration information, or more about the Woodland Advisor program, contact the Cloquet Forestry Center at 888-241-0724 or visit [www.cnr.umn.edu/cfc/wa](http://www.cnr.umn.edu/cfc/wa).